

Real time stock market education



Stock Market Newsletter

Last updated: Sunday, 04-May-2003 22:16:28 EDT

The stock market continues the second leg of an advance that started back in October 2002.

The Nasdaq 100 is very close to the December highs, within 2%.

CBOE NASDAQ 100-Weekly 05/02/2003 C=1136.510 +53.320



If the Nasdaq 100 can trade above and close above the December 2002 highs, then the potential for an advance to the 1265 - 1300 level is likely. That's more than 11% above current market prices.

1265 is the 50% retracement level of the December 2001 to October 2002 decline.

1300 is the matching move where the price target at D equals the difference between A and B added to the low at C.

Click for the printer friendly version of this week's Report



Requires the Adobe Acrobat reader ... [FREE from Adobe](#)

Have this report sent to you

- Make your life easier, just sign up to receive this report by email.
- An email will be sent to you when the report is ready.
- You'll have time sensitive info to profit from - before it becomes old news.
- As a subscriber to this FREE market report, your privacy is respected.

First Name:

Email:

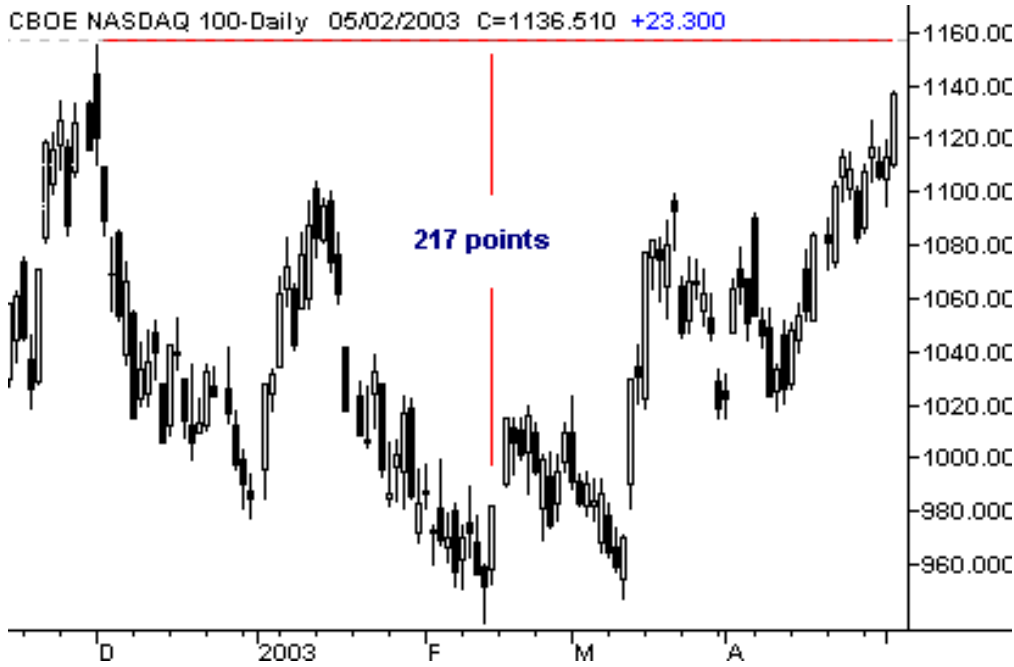
You will receive an email confirming your request.

CBOE NASDAQ 100-Weekly 05/02/2003 C=1136.510 +53.320



Another method of measuring a potential move involves waiting for a break above a double top then measuring from the double top to the lowest price in between.

CBOE NASDAQ 100-Daily 05/02/2003 C=1136.510 +23.300



Take that difference, 217 points, and add it to the top of the double top.

This gives you a price target. Coincidentally, this price level corresponds with the 62% retracement level from a larger time frame.



Keep in mind this is all well and good. But first, the market needs to actually make a double top and break through for this measurement method to have any validity.


Trade well!!

Dave

Quality content - pre-licensed for your use

You are invited to use this article in your publication or website. The only requirement is that you include the following:

*** Article by Dave Wooding of the Wooding Trading Company. Dave's site includes useful stock market trading information. Visit <http://www.woodingtrading.com> for more FREE information about how the stock market works, trading tutorials and stock market education. If you would like to receive information on a regular basis, simply send a blank email: <mailto:newsletter@woodingtrading.com>

**Wooding Trading** is located in Boise, ID USA

Copyright © 1999-2003 Wooding Trading

All rights reserved.

No part of this website may be reproduced or transmitted in any form or by any means without written permission from the author.

[Stock Trading Education - Home](#) | [Stock Trading System](#) | [Trading Pattern](#) | [Trading Course](#) | [Products](#) | [Trading Tutorial](#) | [FREE Newsletter](#) | [Stock Market Newsletter](#) | [Trading Books](#) | [Trading Lessons](#) | [Swing Trading](#) | [Glossary](#) | [Site Map](#) | [Privacy](#) | [Legal](#) | [Contact](#)

Copyright © 2003 Wooding Trading